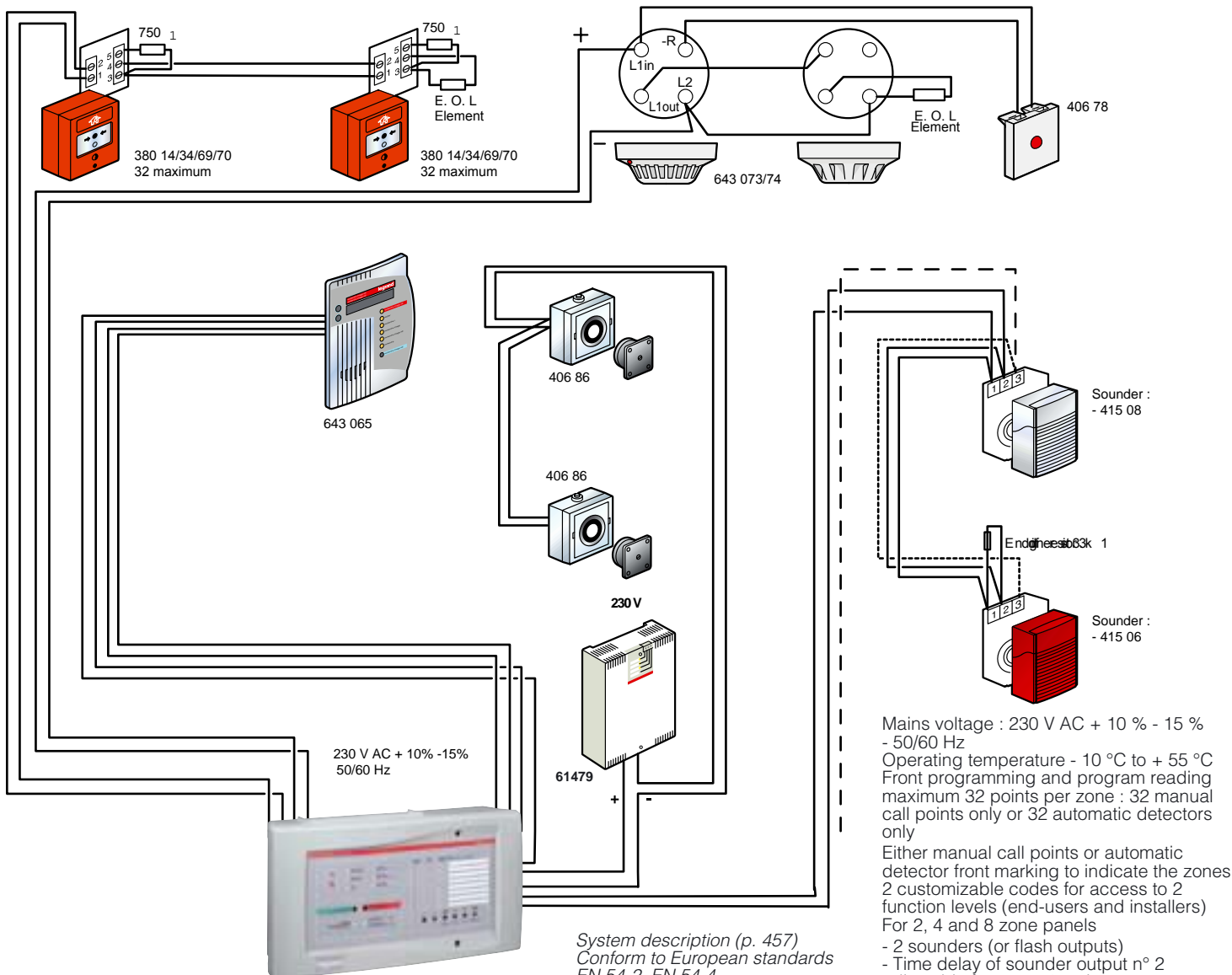


Fire Alarm panels



System description (p. 457)
Conform to European standards
EN 54-2, EN 54-4

Mains voltage : 230 V AC + 10 % - 15 %
- 50/60 Hz
Operating temperature - 10 °C to + 55 °C
Front programming and program reading
maximum 32 points per zone : 32 manual
call points only or 32 automatic detectors
only
Either manual call points or automatic
detector front marking to indicate the zones
2 customizable codes for access to 2
function levels (end-users and installers)
For 2, 4 and 8 zone panels
- 2 sounders (or flash outputs)
- Time delay of sounder output n° 2
adjustable from 0 to 10 minutes
- Operation on day / night mode
Programming of detection zones with
sounder 3 output n° 2
- Option of connecting up to 3 repeater
panels
English / Spanish or French German labels

8-zone Salvena panel

English Spanish	French German
6430 23	6430 13

- 8 detection loops
- 2 sounder (or flash) outputs 1.2 A
- 1 general fire volt free changeover contact (1 A 24 VDC)
- 1 general fault volt free changeover contact (1 A 24 VDC)
- 4 auxiliary changeover 24 V - 1 A
- Programming of auxiliary contacts with detection zones
- 1 continuous or resettable output 24 V - 200 mA
- 1 input for service signal (class change)
- Autonomy : 72 hour standby + 30 minutes alarm
- Battery not supplied (Cat. No 6430 56)
- Option of remote control for day / night mode
- IP30 - IK07

Repeater panel

6430 65

Report of information supplied by the panel (fire, fault, out-of-order, test) on liquid crystal display
Max. 3 repeaters per central unit

www.seven-a.com

Tel.02 331 4211 Fax.02 331 1711

Automatic detectors

Supplied with base

Heat detector

6430 73

Detects temperature rise with threshold of 60 °C, average detection area : 30 m²

Optical smoke detector

6430 74

For rapid detection of fire starting before flames appear
Average detection area : 60 m²

Remote light indicator

406 78

For connection of detectors when they are installed out of site
Flush-mounting fixing with Mosaic support Cat.No 748 02 p. 328, plate Cat. No 750 02
Surface-mounting fixing with Mosaic support Cat.No 748 02 p. 328, plate Cat.No 750 02 p. 327 and frame Cat.No 893 14/20 p. 328

Sounders

To be powered supply by fire alarm panel, power box or by filtered stabilised DC power supply
Service signal option (except 414 62)

IP 31 - IK 07

White
415 08

Sound output at 2 m : 90 dB
Surface-mounting. Dimensions : 143 x 121 x 62
Operating voltage range : 12-24-48 V ± 10 %

Red
415 06

Average consumption : 12 V = 20 mA, 24 V = 25 mA, 48 V = 35 mA